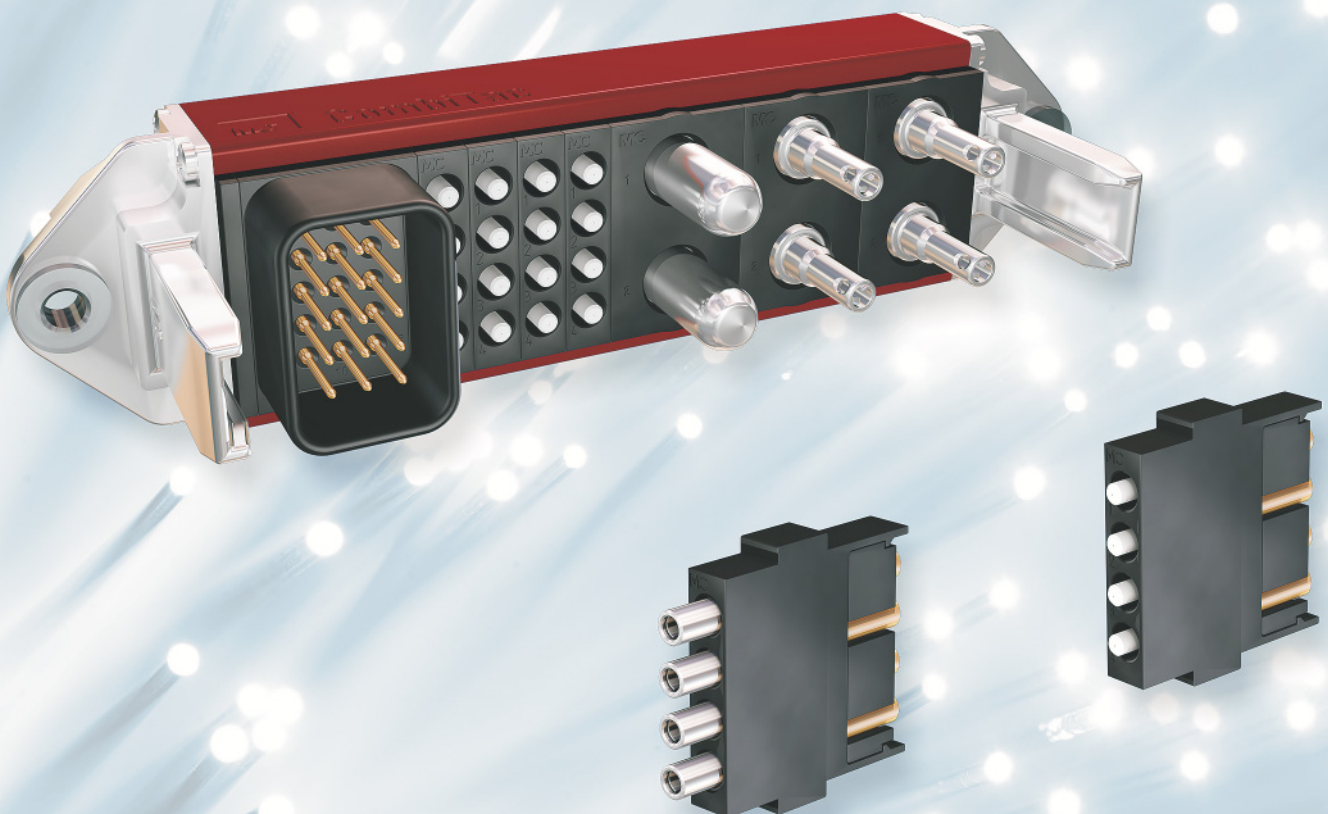


CombiTacline

Industrie-Steckverbinder
Industrial Connectors

Steckverbinder für Glasfaserkabel
Connectors for glass optical fibre cables

Mono- & Multimode



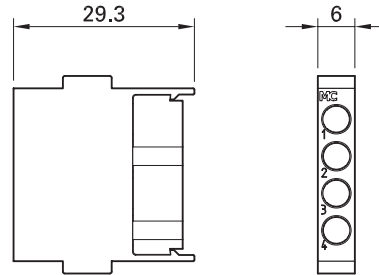
**Kontaktträger
CT-E-4GOF**

4-poliger Kontaktträger CT-E-4GOF aus Kunststoff zur Aufnahme von Glasfaserkontakten.
Der Stift- und Buchsenträger sind identisch.

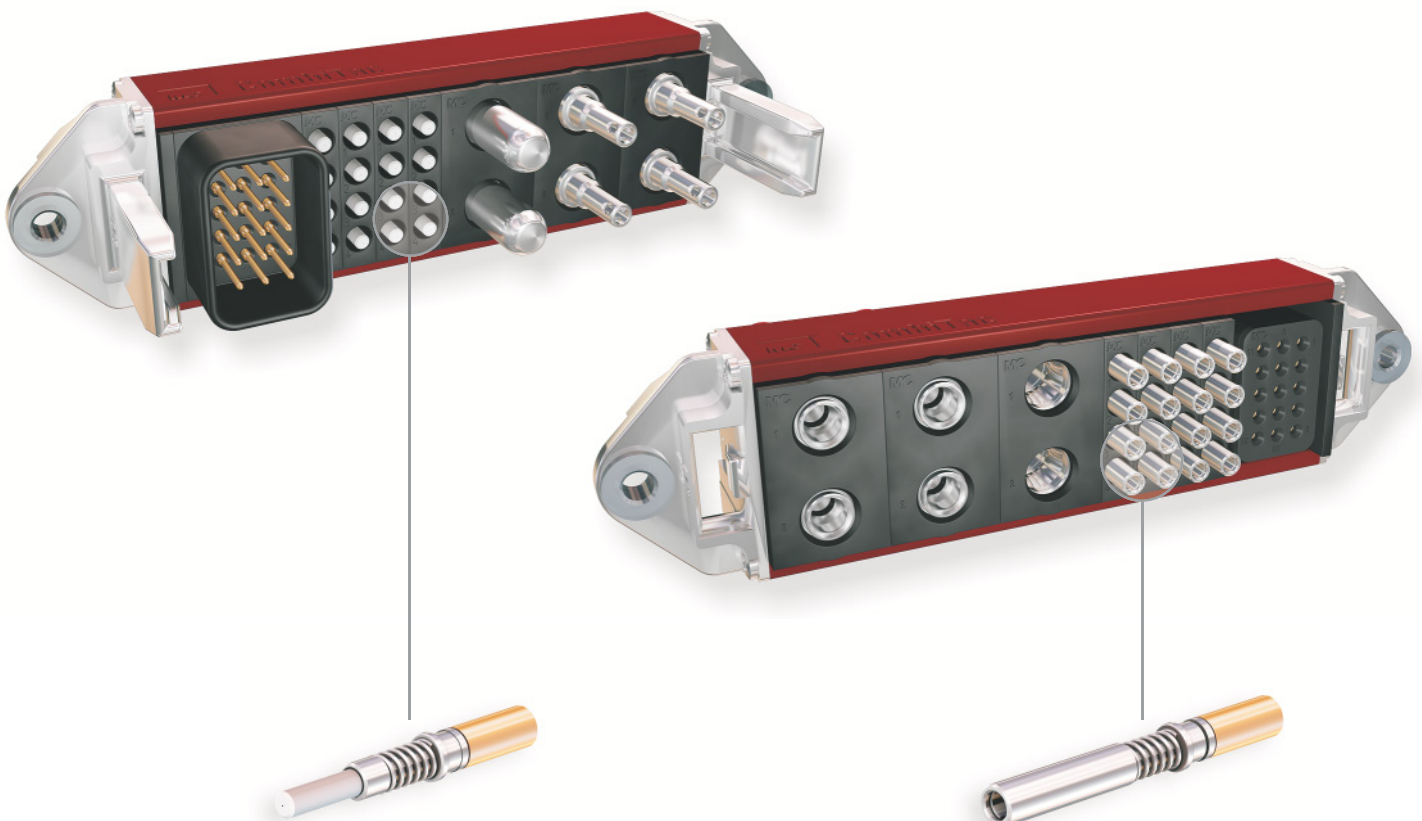
**Contact carriers
CT-E-4GOF**

4-pole plastic contact carrier CT-E-4GOF for mounting of glass optical fibre contacts.
The pin and socket carriers are identical.

CT-E 4GOF



| Typ Type | Bestell-Nr. Order No. |
|-------------|--------------------------|
| CT-E-4GOF | 33.4065 |



**Kontakte
CT.../GOF**

Stift- und Buchsenkontakte CT.../GOF für die Verbindung von Glasfaserkabeln vom Typ GOF-LWL Mono- und Multimode, passend zum Kontaktträger CT-E-4GOF.

Bei den vorkonfektionierten Kabeln ist ein Ende entweder mit ST- oder SC-Steckverbindern ausgestattet. Die Kabellänge beträgt 1m. Fasertyp: Multimode, Gradientenfaser (GI) 50/125µm.

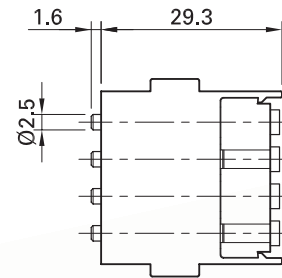
**Contacts
CT.../GOF**

Pin and socket contact CT.../GOF for the connection of glass optical fibre cables of type GOF-LWL Mono- and Multimode, to fit contact carrier CT-E-4GOF.

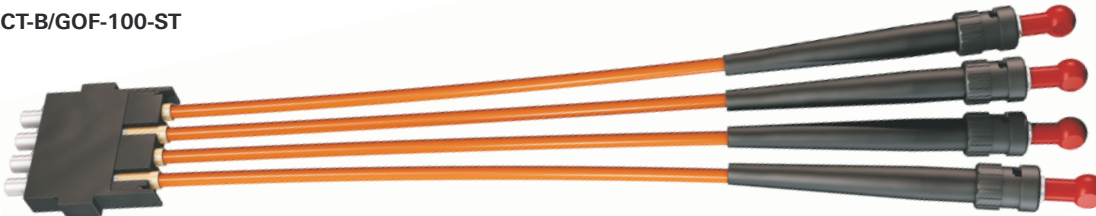
Also available as pre-assembled leads with either standard ST or SC connectors mounted on the tail end. The cable is multi-mode, graded-index fibres (GI) 50/125µm and is 1m long.

CT-B/GOF

CT-S/GOF



CT-B/GOF-100-ST



| Typ Type | Bestell-Nr. Order No. | Stift Pin | Buchse Socket | Bezeichnung Designation | einseitig konfektioniert mit on tail end pre-assembled with |
|------------------------|--------------------------|--------------|------------------|---|--|
| CT-B/GOF | 33.0171 | | × | Kontakt / Contact | |
| CT-S/GOF | 33.0571 | × | | Kontakt / Contact | |
| CT-B/GOF-100-ST | 33.0171-100 | | × | 1m Vorkonfektioniertes Kabel ¹⁾ /Pre-assembled cable ¹⁾ | ST |
| CT-S/GOF-100-ST | 33.0571-100 | × | | 1m Vorkonfektioniertes Kabel ¹⁾ /Pre-assembled cable ¹⁾ | ST |
| CT-B/GOF-100-SC | 33.0172-100 | | × | 1m Vorkonfektioniertes Kabel ¹⁾ /Pre-assembled cable ¹⁾ | SC |
| CT-S/GOF-100-SC | 33.0572-100 | × | | 1m Vorkonfektioniertes Kabel ¹⁾ /Pre-assembled cable ¹⁾ | SC |

¹⁾ Andere Kabellängen und Steckverbinder auf Anfrage

¹⁾ Other cable lengths and connectors on request

Fasertypen

Fibre types

| | | |
|----------------------|-------------------------|-------------------|
| Gradientenfaser (GI) | Graded-index fibre (GI) | 50/125µm |
| Gradientenfaser (GI) | Graded-index fibre (GI) | 62,5/125µm |
| Singlemodefaser (SM) | Single mode fibres (SM) | 9/125µm |
| Coatingdurchmesser | Coating diameter | 250/900µm |
| Ø des Kabels | Ø of cable | max. 3mm |

Technische Daten

Technical data

| | | |
|-------------------|-------------------|---|
| Einfügedämpfung | Insertion loss | <0,5dB bei 1310nm, abhängig von Konfektionierung <0,5dB at 1310nm, depending on assembly type |
| Steckzyklen | Mating cycles | ≥ 500 (Reinigungsintervall alle 100 Steckzyklen)²⁾ ≥ 500 (Cleaning interval every 100 mating cycles)²⁾ |
| Federweg | Spring deflection | 3mm |
| Anpressdruck | Contact pressure | 10N pro Kontakt bei 3mm Federweg 10N per contact with 3mm spring deflection |
| Temperaturbereich | Temperature range | -30°C ... +90°C |

²⁾ Regelmässiges Reinigen der Kontaktoberfläche erhöht die Anzahl der Steckzyklen

²⁾ Cleaning the contact surface at regular intervals increases the number of mating cycles

Headquarters:**Multi-Contact AG**

Stockbrunnenrain 8
CH – 4123 Allschwil
Tel. +41/61/306 55 55
Fax +41/61/306 55 56
mail basel@multi-contact.com
www.multi-contact.com

Multi-Contact Deutschland GmbH

Hegenheimer Strasse 19
Postfach 1606
DE – 79551 Weil am Rhein
Tel. +49/76 21/6 67 - 0
Fax +49/76 21/6 67 - 100
mail weil@multi-contact.com

Multi-Contact Essen GmbH

Westendstrasse 10
Postfach 10 25 27
DE – 45025 Essen
Tel. +49/2 01/8 31 05 - 0
Fax +49/2 01/8 31 05 - 99
mail essen@multi-contact.com

Multi-Contact France SAS

4 rue de l'Industrie
BP 37
FR – 68221 Héisingue Cedex
Tel. +33/3/89 67 65 70
Fax +33/3/89 69 27 96
mail france@multi-contact.com

Multi-Contact USA

100 Market Street
US – Windsor, CA 95492
Tel. +1/707/838 - 0530
Fax +1/707/838 - 2474
mail usa@multi-contact.com
www.multi-contact-usa.com

Multi-Contact**Handelsges.m.b.H. Austria**

Hauptplatz 8
AT – 3452 Heiligeneich
Tel. +43/2275/56 56
Fax +43/2275/56 56 4
mail austria@multi-contact.com

**Multi-Contact Benelux
c/o Stäubli Benelux N.V.**

Meensesteenweg 407
BE – 8501 Bissegem
Tel. +32/56 36 41 00
Fax +32/56 36 41 10
mail benelux@multi-contact.com

**Multi-Contact Czech
c/o Stäubli Systems, s.r.o.**

Hradecká 536
CZ – 53009 Pardubice
Tel. +420/466/616 126
Fax +420/466/616 127
mail connectors.cz@staubli.com

**Multi-Contact Española
c/o Stäubli Española S.A.**

C/Marià Aguiló, 4 – 1º
ES – 08205 Sabadell
Tel. +34/93/720 65 50
Fax +34/93/712 42 56
mail spain@multi-contact.com

Multi-Contact (UK) Ltd.

3 Presley Way
Crownhill, Milton Keynes
GB – Buckinghamshire MK8 0ES
Tel. +44/1908 26 55 44
Fax +44/1908 26 20 80
mail uk@multi-contact.com

**Multi-Contact Italia
c/o Stäubli Italia S.p.A.**

Via Rivera, 55
IT – 20841 Carate Brianza (MB)
Tel. +39/0362/94 45 01
Fax +39/0362/94 45 80
mail italy@multi-contact.com

**Multi-Contact Portugal
c/o Stäubli Portugal**

Representações Lda
Via Central de Milheirós, 171-A
PT – 4475-330 Milheirós/Maia
Tel. +351/229 783 956
Fax +351/229 783 959
mail portugal@multi-contact.com

**Multi-Contact Türkiye
c/o Stäubli Sanayi Makine ve**

Aksesuarları Ticaret Ltd. Şti.
Atatürk Mahallesi, Marmara
Sanayi Sitesi, B Blok No: 28 İkitelli
TR – 34306 İstanbul
Tel. +90/212/472 13 00
Fax +90/212/472 12 30
mail turkey@multi-contact.com

**Multi-Contact Russia
OOO STAUBLI RUS**

ul.Startovaya 8a
RU – 196210 Saint Petersburg
Tel. + 7 812 334 46 30
Fax + 7 812 334 46 36
mail russia@multi-contact.com
www.multi-contact-russia.ru

**Multi-Contact Brazil
c/o Stäubli Comércio, Importação,
Exportação e Representações Ltda.**

Rua Henri Dunant, 137 - Conj. D
BR – 04709-110 São Paulo
Tel. +55/11/2348 7400
Fax +55/11/5181 8334
mail brazil@multi-contact.com

**Multi-Contact China
c/o Stäubli Mechatronic Co. Ltd.**

Hangzhou Economic and
Technological Development Zone
No. 5, 4th Street
CN – 310018 Hangzhou
Tel. +86/571/869 121 61
Fax +86/571/869 125 22
mail hangzhou@staubli.com

**Multi-Contact Hongkong
c/o Stäubli (H.K.) Ltd.**

Unit 87, 12/F, HITEC
No. 1 Trademart Drive
Kowloon Bay
HK – Hong Kong
Tel. +852/2366 0660
Fax +852/2311 4677
mail connectors.hk@staubli.com

**Multi-Contact Taiwan
c/o Stäubli (H.K.) Ltd.**

Taiwan Branch
6/F-3, No. 21, Lane 583
Ruiguang Road, Neihu Dist.
TW – Taipei City 11466
Tel. +886/2/8797 7795
Fax +886/2/8797 8895
mail connectors.tw@staubli.com

**Multi-Contact Korea
c/o Stäubli Korea Co., Ltd.**

2F, DCCI, 107-2,
Shincheon-dong, Dong-gu,
ROK – 701-702 Daegu
Tel. +82/53/753/0075
Fax +82/53/753/0072
mail korea@multi-contact.com

**Multi-Contact
(South East Asia) Pte. Ltd.**

215 Henderson Road #01-02
Henderson Industrial Park
SG – Singapore 159554
Tel. +65/626 609 00
Fax +65/626 610 66
mail singapore@multi-contact.com

Multi-Contact (Thailand) Co., Ltd.

160/865-866 Silom Road
ITF-Silom Palace 33rd Floor
Suriyawong, Bangrak
TH – Bangkok 10500
Tel. +66/2/266 78 79; 268 08 04
Fax +66/2/267 76 80
mail thailand@multi-contact.com

Ihre Multi-Contact Vertretung:
Your Multi-Contact representative:



Sie finden Ihren Ansprechpartner unter
You will find your local partner at